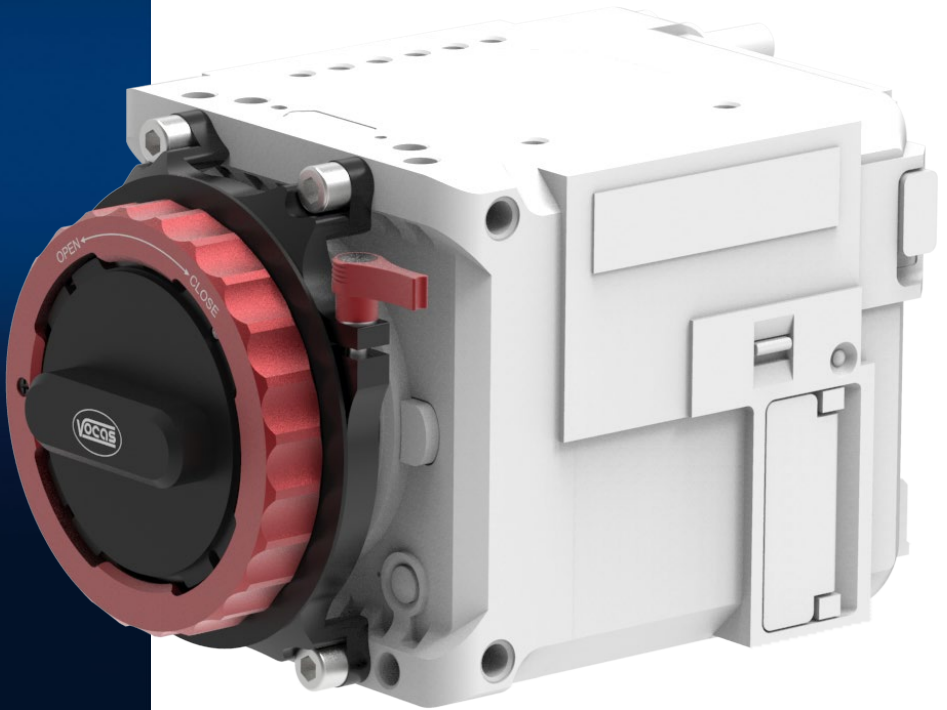




*User manual  
PL and LPL adapter support  
for RED V-RAPTOR*

*Version 1.0.0*



## ***Index:***

<b>Introduction:</b> .....	3
<b>What is in the box:</b> .....	3
<b>How to mount the support to the camera:</b> .....	4
<b>Contact data:</b> .....	5

## ***Introduction:***

Thank you for purchasing a Vocas product.

This bracket will provide extra support to your PL or LPL lens adapter. It is compatible with our Canon R-mount to PL adapter (0900-0018) and our Canon R-mount LPL adapter (0900-0119).



## ***What is in the box:***

Vocas PL and LPL adapter support for RED V-RAPTOR (0900-0035):

- support bracket
- step down ring for PL adapter
- allen key 3/16"

## ***How to mount the support to the camera:***

1. Attach the bracket to the front of the camera using the included four ¼" bolts.
2. Do not fully tighten the four bolts, leave about a ¼ turn.
3. When using the PL adapter (0900-0018) the included step down ring has to be inserted in the front of the bracket.  
Please note: this is not necessary when using the LPL adapter (0900-0119).
4. Make sure the red winged nut is loose.
5. Attach the adapter in the camera, as shown in the manual of the camera.
6. Lock the red winged nut.  
When needed, the red winged nut can be readjusted by pulling it upwards and rotating it.
7. Now fully tighten the four ¼" bolts.
8. The optical center of the bracket is now fully aligned with the camera.

**Contact information:**

Vocas Systems B.V.  
Larenseweg 121  
1221 CL Hilversum  
The Netherlands  
T:+31 35 6233707  
info@vocas.com  
vocas.com