

VOCAS

Vocas camera support system

SONY

PMW-F5 & F55



WWW.VOCAS.COM

MB-455 matte box

Full option high-end production matte box, two fully rotatable 4"x5,65" / 5.65"x5,65" filter frames, one non rotatable 4"x5,65" filter frame, one optional fixed 4"x5,65" filter frame in the hood, one 138 mm round filter (rotatable) in optional donut adapterring and a French flag. Max. lens diameter of 143 mm.

Patented internal eyebrows and optional tilted filter for maximum lens flare reduction.

0400-0455

MB-436 matte box

Advanced matte box, one fully rotatable 4"x5,65" / 5.65"x5,65" filter frame, one non rotatable 4"x5,65" / 5.65"x5,65" filter frame, one fixed 4"x5,65" filter compartment in the hood, one 138 mm round filter (rotatable) in optional donut adapterring, and a French flag. Suitable for top and lower rails with fixed bars adapter. Swing away bracket for lower rails. Max. lens diameter of 143 mm.

Patented internal eyebrows for maximum lens flare reduction.

0400-0436

MB-256 matte box

Advanced compact matte box, one fully rotatable 4"x4" filter frame, one non rotatable 4"x4" filter frame, and a French flag. Suitable for top and lower rails with fixed bars adapter. Swing away bracket for lower rails. Max. lens diameter of 114 mm.

Patented internal eyebrows for maximum lens flare reduction.

0200-0256

Vocas handgrip system

Based on the Arri style rosette and made from high grade materials.

Wooden handgrip right: **0390-0105**

Wooden handgrip left: **0390-0104**

Wooden handgrip right with built-in switch (excl. cable): **0390-0115**

Remote switch for use on leather handgrips or 19 mm tubes (excl. cable): **0390-0160**

Cable for switch, Sony F5/55 / Panasonic Varicam: **0390-0151**

Handgrip combi rail bracket for 19 mm, 15 mm studio and 15 mm LW rails: **0390-0006**

Handgrip 15 mm rail bracket: **0390-0110**

Leather handgrip short: **0390-0004**

Leather handgrip long: **0390-0005**

Adjustable handgrip extender

This very solid adjustable extender can be adjusted in length from 165 mm to 235 mm.

0390-0040

Monitor supports

A monitor support that attaches directly to standard lightweight 15 mm rails and allows the use of a small monitor, external viewfinder or other accessory that can be mounted on a 1/4" screw.

For accessories up to 1,5 kg.

0350-0410 (Magic arm length: 210 mm)

0350-0415 (Magic arm length: 105 mm)

Lens supports

19 mm Arri style lens support

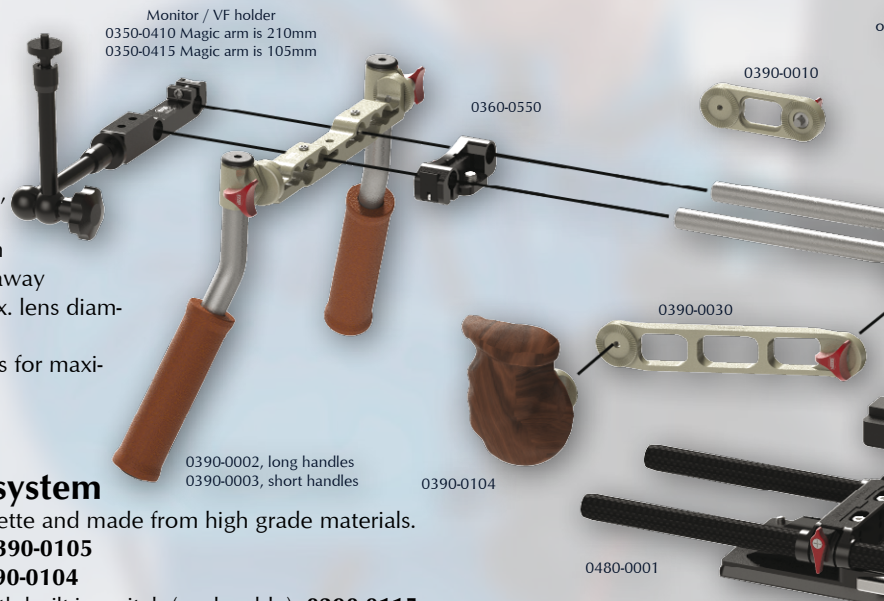
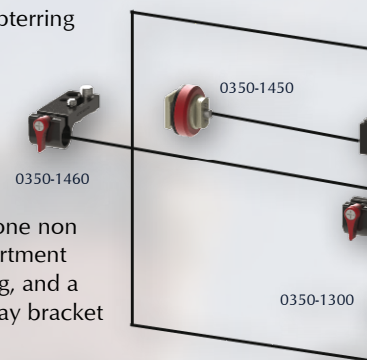
Snap-on connection with tight lock. Adjustable height for optimal support. Y-stand with wheels for support of lenses without connection points. The kit includes 4 extra adapters for the different types of lens connections.

0480-0500

15 mm General lens support

The kit includes 4 extra adapters for the different types lens connections.

0360-0525



ries, all other accessories such as adaptor rings, side
n be found at www.vocas.com.

Base plate for Sony PMW-F5 & F55

Transforms the camera into a true shoulder camera and makes the camera compatible with many other support systems.

Features an adjustable rubber shoulder pad, fixed rosette attachments and 15 mm rails in the front and back.

Base plate, including two pairs of 15 mm rails. **0350-1000**

Top handgrip kit for Sony PMW-F5 & F55

This Top handgrip system has the following features:

Adjustable and reversible handgrip position, wooden inlay for extra comfort, multiple cold-shoe attachments, height adjustable 15 mm top rails, cheese plate, detachable 15 mm viewfinder mount, viewfinder mount and cheese plate also separately available. Top handle kit including one pair of 15 mm rails. **0350-1100**

Support bridge for cheese plate

Sony PMW-F5/55

using AXS-R7

recorder

0350-1315

Viewfinder cable protector and side cheese plate

This plate attaches directly to the right side of the top cheese plate and enables attachment of accessories while protecting the viewfinder cable.

0350-1310

Mic holder 15 mm

This microphone holder can be attached to any standard 15mm rail such as that of the Vocas top handgrips. It is compatible with all standard 1/4" and 3/8" based microphone shockmounts.

0350-1460

Balance plate 19 mm BP-19

This balance plate allows the use of 19 mm rails and precise calibration of the camera's centre of gravity on your tripod. This balance plate is adjustable both horizontally and vertically for optimal configuration with most broadcast level shoulder cameras equipped with dovetail type tripod plate. Including two pieces 19 mm rail, 400 mm in length.

0480-0001

BP-18 19 mm balance plate

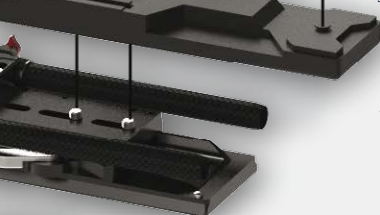
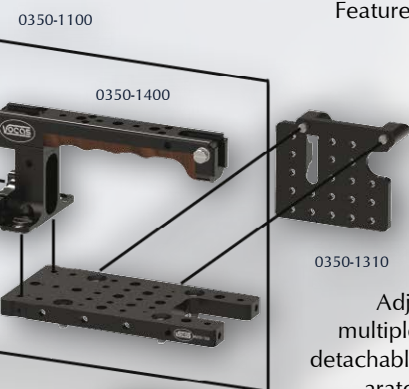
This balance plate allows the use of 19 mm rails and precise calibration of the camera's centre of gravity on your tripod. Compatible with other industry standard balance plates. This plate fits directly under the 15mm base plate 0350-1000. Including two pieces of 19 mm carbon rails, 400 mm in length.

0480-0018

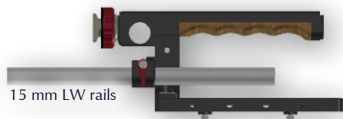
MFC-2S follow focus

Available with the innovative walnut palm support and a walnut focus knob. The technical specifications are among others, a modular design, different gear ratios (ENG, Cinema), reversible rotation direction and is highly adjustable for optimal personal comfort.

0500-3000 / 0500-3010 / 0500-3100 / 0500-3110



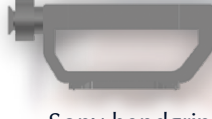
Vocas Sony PMW-F5/55 support system



15 mm LW rails

Vocas Top handgrip kit
0350-1100

Incl. Cheese plate 0350-1300

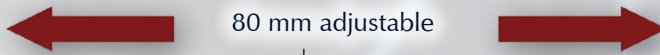


Sony handgrip

Vocas cheese plate
0350-1300



Sony PMW-F5/55



80 mm adjustable

15 mm LW rails



15 mm LW rails

Vocas F5/55 support 0350-1000



On tripod
with Sony
VCT14.

Directly on
tripod.



19mm rails

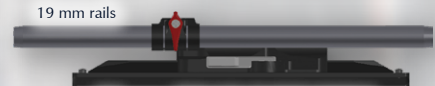
BP-18 19 mm rail support
0480-0018



Sony VCT14 tripod plate



Sony VCT14 tripod plate



19 mm rails

Vocas BP-19 0480-0001



PO Box 191, 1200 AD, Hilversum, The Netherlands.
Tel.: +31(0)35-6233707, Fax: +31(0)35-6233997
e-mail: info@vocas.com, Web: www.vocas.com

Vocas products are made in Holland

Your reseller:

See www.vocas.com/where-to-buy for your local reseller.

March 2017

Vocas