



*Vocas camera support system*

# Panasonic



## VARICAM

# HS, 35 & LT



This is a selection of the most important accessories flags, filter frames etc, can be found on

### MB-455 matte box

Full option high-end production matte box, two fully rotatable 4"x5,65" / 5.65"x5,65" filter frames, one non rotatable 4"x5,65" filter frame, one optional fixed 4"x5,65" filter frame in the hood, one 138 mm round filter (rotatable) in optional donut adapterring and a French flag. Max. lens diameter of 143 mm. Patented internal eyebrows and optional tilted filter for maximum lens flare reduction.

0400-0455

### MB-436 matte box

Advanced matte box, one fully rotatable 4"x5,65" / 5.65"x5,65" filter frame, one non rotatable 4"x5,65" / 5.65"x5,65" filter frame, one fixed 4"x5,65" filter compartment in the hood, one 138 mm round filter (rotatable) in optional donut adapterring, and a French flag. Suitable for top and lower rails with fixed bars adapter. Swing away bracket for lower rails. Max. lens diameter of 143 mm. Patented internal eyebrows for maximum lens flare reduction.

0400-0436

### MB-256 matte box

Advanced compact matte box, one fully rotatable 4"x4" filter frame, one non rotatable 4"x4" filter frame, and a French flag. Suitable for top and lower rails with fixed bars adapter. Swing away bracket for lower rails. Max. lens diameter of 114 mm. Patented internal eyebrows for maximum lens flare reduction.

0200-0256

### Dovetail top and base plate

These top and bottom adapter plates use the dovetail principle so they can be moved forwards or backwards, in relation to the camera, to find the optimal balance on your shoulder or tripod.

0350-1380 Dovetail top cheese plate.

0350-1400 Separate handgrip which can be mounted reversable to find an even more comfortable point of balance.

0350-1455 This 15 mm viewfinder adapter can be mounted on either side of the Vocas top handgrip and allows the use of 15 mm based viewfinder systems.

0490-0025 Dovetail base plate adapter. compatible with the following base plates: 0350-2200; 0350-2205

### Base plate adapter for Panasonic Varicam

This base plate adapter for the Panasonic Varicam allows the use of the Vocas shoulder base plate 0350-1000 and the universal USBP shoulder base plates.

0350-1060

### Base plate

Transforms the camera into a true shoulder camera and makes the camera compatible with many other support systems. Features an adjustable rubber shoulder pad, fixed rosette attachments and 15 mm rails in the front and back. This base plate is compatible with the Sony VCT-14 or Panasonic SHAN-TM700 tripod plate or our BP-18 19 mm support. Base plate including two pairs of 15 mm rails.

0350-1000

### BP-18 19 mm Balance plate

This balance plate allows the use of 19 mm rails and precise calibration of the camera's centre of gravity on your tripod. Compatible with other industry standard balance plates. Including two pieces of 19 mm carbon rails, 400 mm in length.

0480-0018



0400-0436

0420-0601

0460-0600

0360-0525

0500-3110



es, all other accessories such as adaptor rings, side  
our solutions finder at [www.vocas.com](http://www.vocas.com).

## Vocas handgrip system

Based on the Arri style rosette and made from high grade materials.

Wooden handgrip right: **0390-0105**

Wooden handgrip left: **0390-0104**

Wooden handgrip right with built-in switch (excl. cable): **0390-0115**

Remote switch for use on leather handgrips or 19 mm tubes (excl. cable): **0390-0160**

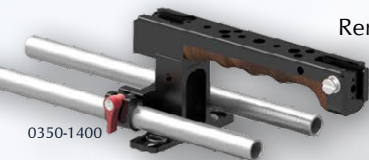
Cable for switch, Panasonic Varicam: **0390-0151**

Handgrip combi rail bracket for 19 mm, 15 mm studio and 15 mm LW rails: **0390-0006**

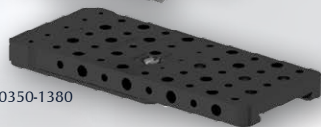
Handgrip 15 mm rail bracket: **0390-0110**

Leather handgrip short: **0390-0004**

Leather handgrip long: **0390-0005**



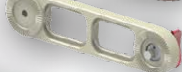
0350-1400



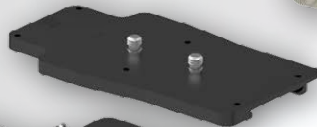
0350-1380



0390-0105



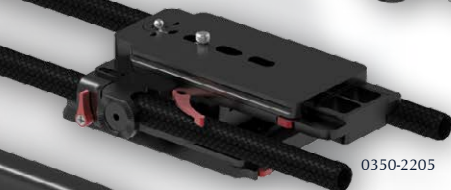
0390-0020



0490-0025



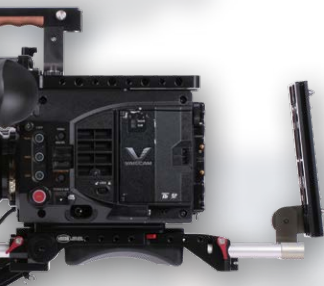
0350-2200



0350-2205



0480-0030



0370-0300



## Lens supports

### 19 mm Arri style lens support.

Snap-on connection with tight lock. Adjustable height for optimal support. Y-stand with wheels for support of lenses without connection points. The kit includes 4 extra adapters for the different types of lens connections.

**0480-0500**

### 15 mm General lens support

The kit includes 4 extra adapters for the different types lens connections.

**0360-0525**

### 15 mm Arri style lens support

**0360-0550**



## Monitor supports

A monitor support that attaches directly to standard lightweight 15 mm rails and allows the use of a small monitor, external viewfinder or other accessory that can be mounted on a 1/4" screw.

For accessories up to 1,5 kg.

**0350-0410** Magic arm length: 210 mm

**0350-0415** Magic arm length: 105 mm



## USBP-15 MKII

This new base plate features everything you need to convert your camera into a shoulder camera, and is compatible with a lot of camera such as the Sony PXW-FS5, Arri Alexa Mini, Canon EOS C100/C300/C500 and the Panasonic Varicam HS/S35.

**0350-2200**



## USBP-19 MKII

Height adjustable 19 mm base plate. Includes: 2 pieces carbon 19 mm rail, 400 mm in length (0480-8400), a camera adapter plate (0350-2250) a dovetail shoulder support (0480-0030) and a short balance dovetail plate (0350-2020)

**0350-2205**



## MFC-2S follow focus system

Available with the innovative walnut palm support and a walnut focus knob. The technical specifications are among others, a modular design, different gear ratios (ENG, Cinema), reversible rotation direction and is highly adjustable for optimal personal comfort.

**0500-3000 / 0500-3010 / 0500-3100 / 0500-3110**



## MFC-6 follow focus system

The new Vocas studio follow focus MFC-6 has a very big advantage compared to our competition, a self-adjusting drive arm! A high quality follow focus still can work poorly because of improper calibration.

With the new Vocas self-adjusting drive arm this problem belongs to the past!



The new Vocas studio follow focus MFC-6 has the same modular design as the Vocas follow focus MFC-2. Having the same modular design makes it possible to exchange accessories like the different knobs and drive gears!

**0500-4010 / 0500-4011**



<b>0256-2010</b>	<b>Compact MB-256 matte box kit for any camera with 15 mm LW support. Consisting of:</b>
0200-0256	MB-256 matte box.
0250-0190	114 mm flexible cuff adapter ring. Max lens diameter: 110 mm.
0360-0100	Adjustable bars adapter for MB-2XX and MB-3XX series matte boxes.



<b>0436-2010</b>	<b>Advanced MB-436 matte box kit for any camera with 15 mm LW support. Consisting of:</b>
0400-0436	MB-436 matte box.
0420-0601	143 mm flexible donut adapter ring. Max lens diameter: 133 mm.
0460-0600	Swing away bracket for MB-216, MB-256 and MB-43X matte box.



<b>0455-2010</b>	<b>Advanced MB-455 matte box kit for any camera with 15 mm LW support. Consisting of:</b>
0400-0455	MB-455 matte box.
0420-0601	143 mm flexible donut adapter ring. Max lens diameter: 133 mm.
0460-0200	Swing away bracket for MB-455 matte box.



<b>0500-3100</b>	<b>MFC-2S CINE kit. Consists of:</b>
0500-1201	MFC-2 knob standard.
0500-1110	MFC-2 gear unit 1:1.75 ratio.
0500-1010	MFC-2S 15 mm snap-on bracket.



<b>0500-3110</b>	<b>MFC-2S Limited Edition CINE kit. Consists of:</b>
0500-1211	MFC-2 knob wood.
0500-1110	MFC-2 gear unit 1:1.75 ratio.
0500-1010	MFC-2S 15 mm snap-on bracket.
0500-1300	MFC-2S palm support wood.
0500-0601	MFC-2 drive gear M0,8/40 T.



<b>0500-4010</b>	<b>MFC-6 1:1 kit. Consists of:</b>
0500-1500	MFC-6 gear box 15 mm
0500-1201	MFC-2 knob standard (2x)
0500-1550	MFC-6 drive arm 1:1
0500-0601	MFC-2 drive gear M0,8/40 T.



<b>0500-4011</b>	<b>MFC-6 1:2 kit. Consists of:</b>
0500-1500	MFC-6 gear box 15 mm
0500-1201	MFC-2 knob standard (2x)
0500-1551	MFC-6 drive arm 1:2
0500-0601	MFC-2 drive gear M0,8/40 T.



PO Box 191, 1200 AD, Hilversum, The Netherlands. Tel.: +31(0)35-6233707, Fax: +31(0)35-6233997 e-mail: info@vocas.com, Web: www.vocas.com	Your reseller:          See <a href="http://www.vocas.com/where-to-buy">www.vocas.com/where-to-buy</a> for your local reseller.
Vocas products are made in Holland	March 2017