

**VOCAS**

*Vocas camera support system*

**JVC**

**GY-LS300**

**GY-HM200**

**GY-HM170**



[WWW.VOCAS.COM](http://WWW.VOCAS.COM)

This is a selection of the most important accessories, flags, filter frames etc, can be found on

### MB-435 matte box

Advanced matte box, one fully rotatable 4"x5,65" / 5.65"x5,65" filter frame, one non rotatable 4"x5,65" / 5.65"x5,65" filter frame, one fixed 4"x5,65" filter compartment in the hood, one 138 mm round filter (rotatable) in optional donut adapterring, and a French flag. Patented internal eyebrows for maximum lens flare reduction. Max. lens diameter of 143 mm.  
**0400-0435**

### MB-255 matte box

Advanced compact matte box, one fully rotatable 4"x4" filter frame, one non rotatable 4"x4" filter frame, and a French flag. Patented internal eyebrows for maximum lens flare reduction. Max. lens diameter of 114 mm.  
**0200-0255**

### MB-215 matte box

Basic compact matte box, one fully rotatable 4"x4" filter frame and one fixed 4"x4" filter compartment in the hood. Max. lens diameter of 114 mm.  
**0200-0215**

### MFC-2S follow focus

Available with the innovative walnut palm support and a walnut focus knob. The technical specifications are among others, a modular design, different gear ratios (ENG, Cinema), reversible rotation direction and is highly adjustable for optimal personal comfort.  
**0500-3000 / 0500-3010 / 0500-3100 / 0500-3110**

### MFC-1/1B follow focus

This compact follow focus system enables the cameraman to control the focus with more precision. Attaches directly to any 15 mm lightweight support with a quick-lock clamber.  
**0500-0001 (with stop, MFC-1)**  
**0500-0002 (without stop, MFC-1B)**

### Monitor supports

A monitor support that attaches directly to standard lightweight 15 mm rails and allows the use of a small monitor, external viewfinder or other accessory that can be mounted on a 1/4" screw.  
For accessories up to 1,5 kg.  
**0350-0410** Magic arm length: 210 mm  
**0350-0415** Magic arm length: 105 mm

### MTF-mount to PL-mount adapter

This adapter allows the use of PL type lenses on cameras that use an MTF-mount. Featuring back focus adjustment and an adjustable end position for the lens locking ring. Including a 15 mm support bracket which connects the adapter directly to 15 mm light weight rails creating a rock solid attachment point for any size lens.  
**0900-0010**

### Universal HD recorder bracket

Can be attached to the rear ends of the 15 mm rails, tiltable and adjustable in height. This bracket is strong enough for the heaviest recorders. Compatible with the Arri style rosette.  
**0370-0300**

### Battery adapter plate for 15 mm rails

For attaching different brands V-lock battery mount plates directly on 15 mm rails. This plate can also hold one weight attachment plate (0370-0200) and other 1/4" accessories.  
**0370-0105**



es, all other accessories such as adaptor rings, side  
our solutions finder at [www.vocas.com](http://www.vocas.com).

## Vocas handgrip system

Based on the Arri style rosette and made from high grade materials.

Wooden handgrip right: **0390-0105**

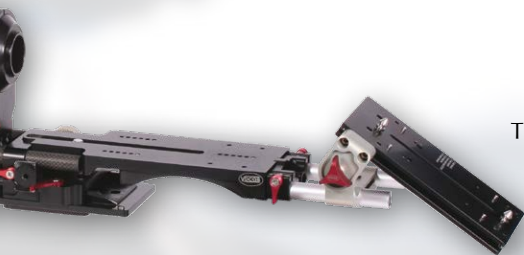
Wooden handgrip left: **0390-0104**

Handgrip combi rail bracket for 19 mm, 15 mm studio and 15 mm LW rails: **0390-0006**

Handgrip 15 mm rail bracket: **0390-0110**

Leather handgrip short: **0390-0004**

Leather handgrip long: **0390-0005**



## Lens supports

15 mm General lens support

The kit includes 4 extra adapters for the different types lens connections.

**0360-0525**

15 mm Arri style lens support.

**0360-0550**

## USBP-15 MKII

This new base plate features everything you need to convert your camera into a shoulder camera, and is compatible with a lot of camera such as the Sony PXW-FS5, Arri Alexa Mini, Canon EOS C100/C300/C500 and the Panasonic Varicam HS/S35.

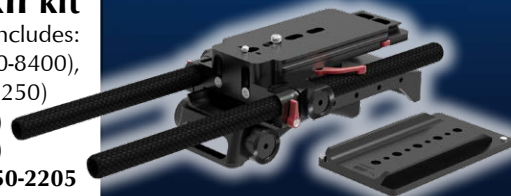
**0350-2200**



## USBP-19 MKII kit

Height adjustable 19 mm base plate. Includes:  
2 pieces carbon 19 mm rail, 400 mm in length (0480-8400),  
a camera adapter plate (0350-2250)  
a dovetail shoulder support (0480-0030)  
and a short balance dovetail plate (0350-2020)

**0350-2205**



## 15 mm Pro rail support

This double sided 15 mm lightweight rail support is compatible with many cameras and provides a very stable platform for attaching multiple additional 15 mm accessories. It includes an extra long balance plate tripod attachment allowing the user to position the camera on its centre of gravity when mounting it on a tripod.

**0350-0600**



## MBS-100 type G4 support

15 mm Rail support with foldable shoulder brace. Including 2 pc 15 mm rails, 160 mm long.

**0350-0012**



## 15 mm Offset bracket

Specially made for use with the Vocas 15 mm shoulder support (0370-0001) and a midsize video camera. This offset bracket moves the shoulder support more to the right side of the camera so the viewfinder is placed in front of the cameraman's eye. This item comes with two pieces of 15 mm rails of 143 mm in length to allow the shoulder support to move towards or away from the camera.

**0350-0021**



## 15 mm Shoulder support

A shoulder support that attaches directly to the end of standard 15 mm lightweight rails. This shoulder support features a thick rubber pad which lets even a heavy camera setup rest comfortably on a shoulder. It can be adjusted in angle to accommodate different body types and features attachment points on the back for accessories or counter weights. This shoulder support includes 350 mm long rails which is sufficient to mount the shoulder support in most setups.

**0370-0001**





<b>0215-2010</b>	<b>MB-215 matte box kit for any camera with 15 mm LW support. Consisting of:</b>
0200-0215	MB-215 matte box.
0250-0190	114 mm Flexible cuff adapter ring. Max. lens diameter: 110 mm.
0360-0100	Adjustable bars adapter for MB-2XX and MB-3XX series matte boxes.

<b>0255-2010</b>	<b>Compact MB-255 matte box kit for any camera with 15 mm LW support. Consisting of:</b>
0200-0255	MB-255 matte box.
0250-0190	114 mm Flexible cuff adapter ring. Max. lens diameter: 110 mm.
0360-0100	Adjustable bars adapter for MB-2XX and MB-3XX series matte boxes.

<b>0435-2010</b>	<b>Advanced MB-435 matte box kit for any camera with 15 mm LW support. Consisting of:</b>
0400-0435	MB-435 matte box.
0420-0601	143 mm Flexible donut adapter ring. Max. lens diameter: 133 mm.
0460-0600	Swing away bracket for MB-435 matte box.

<b>0500-3000</b>	<b>MFC-2S DSLR kit. Consists of:</b>
0500-1205	MFC-2 knob standard with one stop.
0500-1100	MFC-2 gear unit 1:1 ratio.
0500-1010	MFC-2S 15 mm snap-on bracket.

<b>0500-3100</b>	<b>MFC-2S CINE kit. Consists of:</b>
0500-1201	MFC-2 knob standard.
0500-1110	MFC-2 gear unit 1:1.75 ratio.
0500-1010	MFC-2S 15 mm snap-on bracket.

<b>0500-3010</b>	<b>MFC-2S Limited Edition DSLR kit. Consists of:</b>
0500-1215	MFC-2 knob wood with one stop.
0500-1100	MFC-2 gear unit 1:1 ratio.
0500-1010	MFC-2S 15 mm snap-on bracket.
0500-1300	MFC-2S palm support wood.
0500-0601	MFC-2 drive gear M0,8/40 T.
0500-0295-03	3 Pieces flexible gear ring with 2 movable stops

<b>0500-3110</b>	<b>MFC-2S Limited Edition CINE kit. Consists of:</b>
0500-1211	MFC-2 knob wood.
0500-1110	MFC-2 gear unit 1:1.75 ratio.
0500-1010	MFC-2S 15 mm snap-on bracket.
0500-1300	MFC-2S palm support wood.
0500-0601	MFC-2 drive gear M0,8/40 T.

<b>0500-2300</b>	<b>Universal MFC-1 kit. Consisting of:</b>
0500-0001	MFC-1 compact follow focus system.
0500-0101	MFC-1 drive gear M0,8/46 T.
0500-0295	Flexible gear ring with 2 movable stops.

PO Box 191, 1200 AD, Hilversum, The Netherlands.  
 Tel.: +31(0)35-6233707, Fax: +31(0)35-6233997  
 e-mail: info@vocas.com, Web: www.vocas.com

Your reseller:

Vocas products are made in Holland

See [www.vocas.com/where-to-buy](http://www.vocas.com/where-to-buy) for your local reseller.  
 September 2016

