



# Index:

Introduction:.....	3
What's in the box? .....	4
Flexible Camera Rig, FCR-15 0350-3000: .....	4
Component overview: .....	5
Basics:.....	6
Possible setups: .....	7
Setup examples:.....	9
How to attach your camera to the rig: .....	10
Accessories: .....	11

## Introduction:

Thank you for purchasing a Vocas product. You are now the owner of a Flexible Camera Rig, FCR-15!

The FCR-15 is a 15 mm height adjustable camera rig with an ARCA balancing system and an extremely flexible shoulder pad, which offers a high variety of shoulder mounting positions. The top of the rig is equipped with an ARCA camera dovetail plate, offering quick release sliding and balancing options for your camera setup. More than 25 years of experience are part of this design and functionality.

Can you imagine a camera rig that allows you to use many different compact to medium size cameras, in many different configurations?

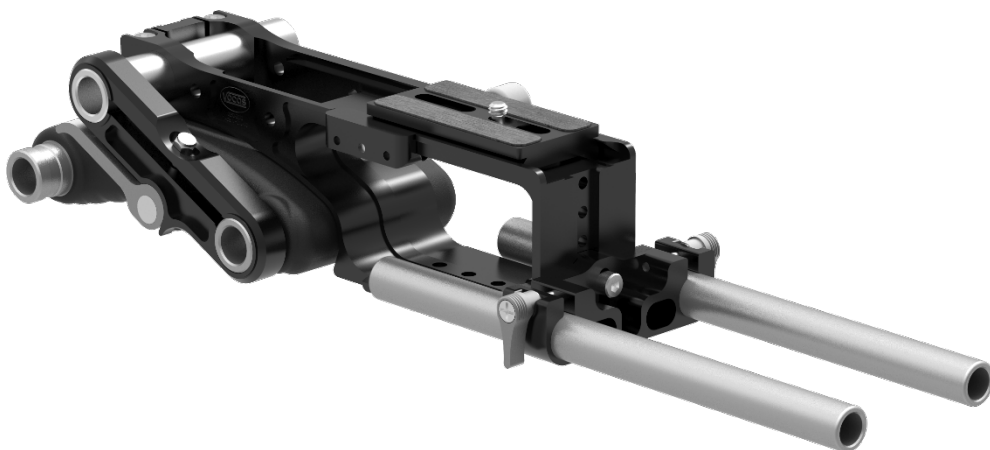
On its own this rig is already very versatile to use, but for people who like to add a personal touch to the rig, many optional accessories can be selected.

## What's in the box?

Each Flexible Camera Rig includes a comfortable shoulder pad and a quick release ARCA camera dovetail plate.

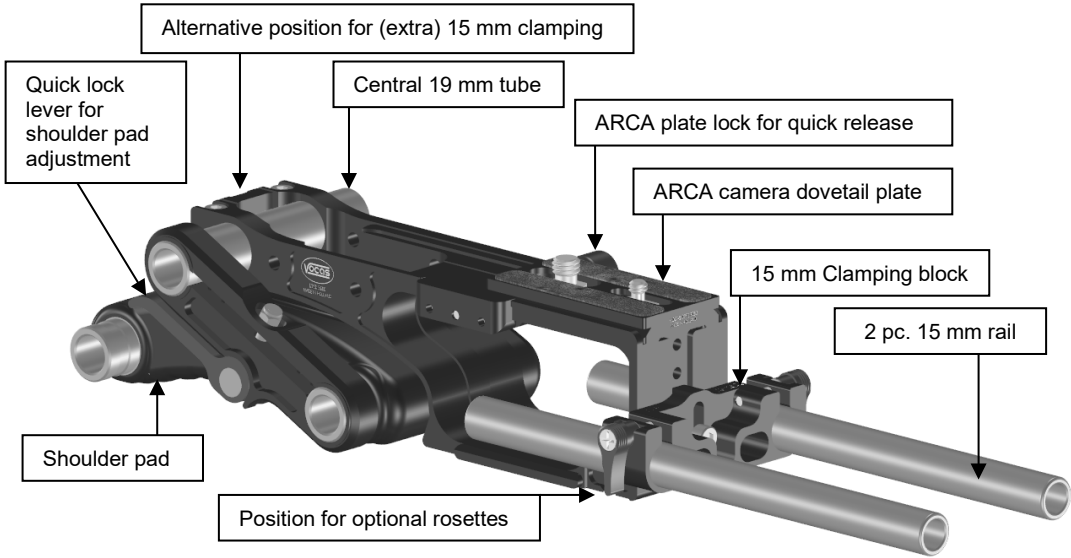
### Flexible Camera Rig, FCR-15 0350-3000:

- Flexible Camera Rig, 0350-3000
- Adjustable shoulder pad
- ARCA camera dovetail plate with one 1/4" screw and one 3/8" screw
- Hexagonal Allen key 4 mm
- 2 pc. Aluminum 15 mm rail, 210 mm long
- Alignment card
- This manual



# Component overview:

(FCR-15 0350-3000)



Optional FCR-15 tophandle 0350-3010



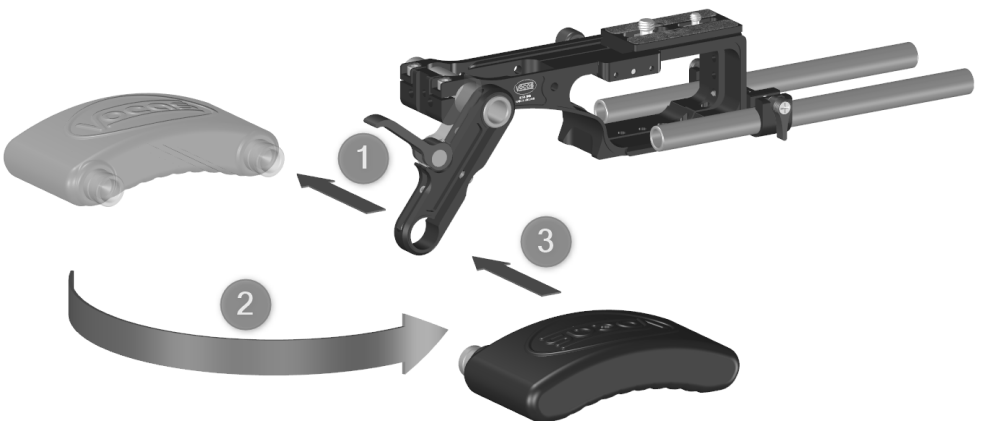
## Basics:

### How to adjust the shoulder pad?

Pull the red quick lock lever upwards (1) to release the shoulder pad.  
Move the shoulder pad backwards (2) and close the quick lock lever (3).



If you want the camera to be more offset to the left, you can reposition the shoulder pad to the right by (1) pulling it out (leftwards), rotating it (2), and putting it back as shown (3).



## Possible setups:

We roughly distinguish 4 different setups. Usually the position of your viewfinder (or LCD screen) determines the setup you will want to use.

1. Normal shoulder setup. The camera is positioned on your shoulder. Use external LCD screen or viewfinder.



2. Shoulder setup, The camera is located more to the front, for viewing side LCD screens on camjo cameras.



3. Chest support for low point of view.



4. Shoulder pad positioned max to the rear and off-set. For viewing rear lcd screens and viewfinders.

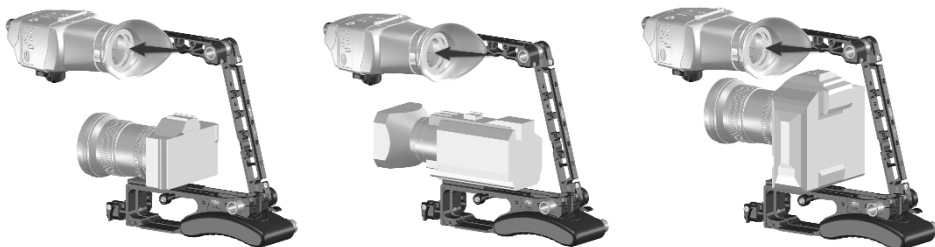




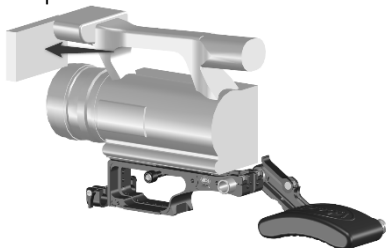
## Setup examples:

The used viewfinder is indicated with an arrow.

Setup 1:



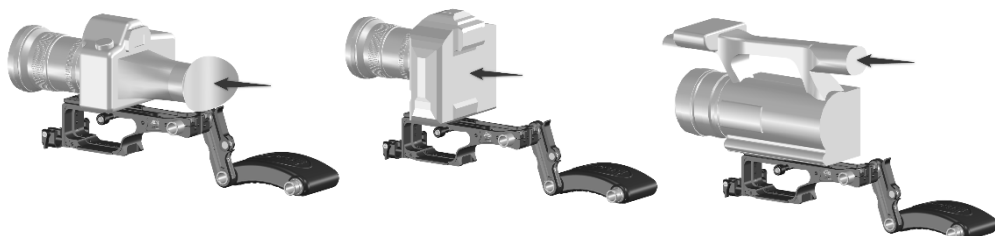
Setup 2:



Setup 3:

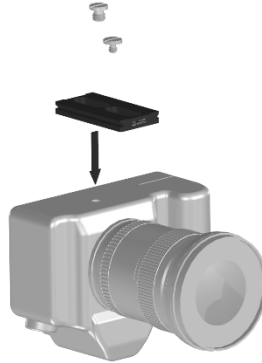


Setup 4:



## How to attach your camera to the rig:

1. Remove the ARCA camera dovetail plate from your FCR-15, and attach it to your camera. Use one, or if possible (preferably) 2 screws.

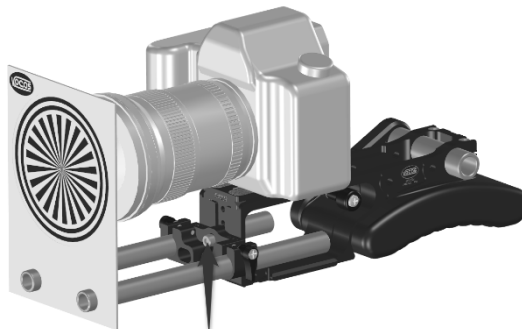


2. With slight released lock knob, slide the camera in de baseplate from the front (1). Or, alternatively, with fully released lock knob, put the camera in the baseplate from the top (2).



ARCA plate lock for quick release

3. Now adjust the height of the rails to the correct distance to the lens. Release the indicated hexagonal screw with the supplied hexagonal Allen key slightly. Put the supplied "alignment card" on the rails as shown, and slide the rails up or down until the circles on the alignment card correspond with the lens. Now tighten the hexagonal screw to fix the height of the rails to the base plate.



## Accessories:

For all available accessories and ready to use kits please see:  
<https://www.vocas.com/supports-and-rigs/flexible-rig>

